

Forsgren's
Pheasant
Farm Inc.
est. 1968

11th MacFarlane biennial seminar



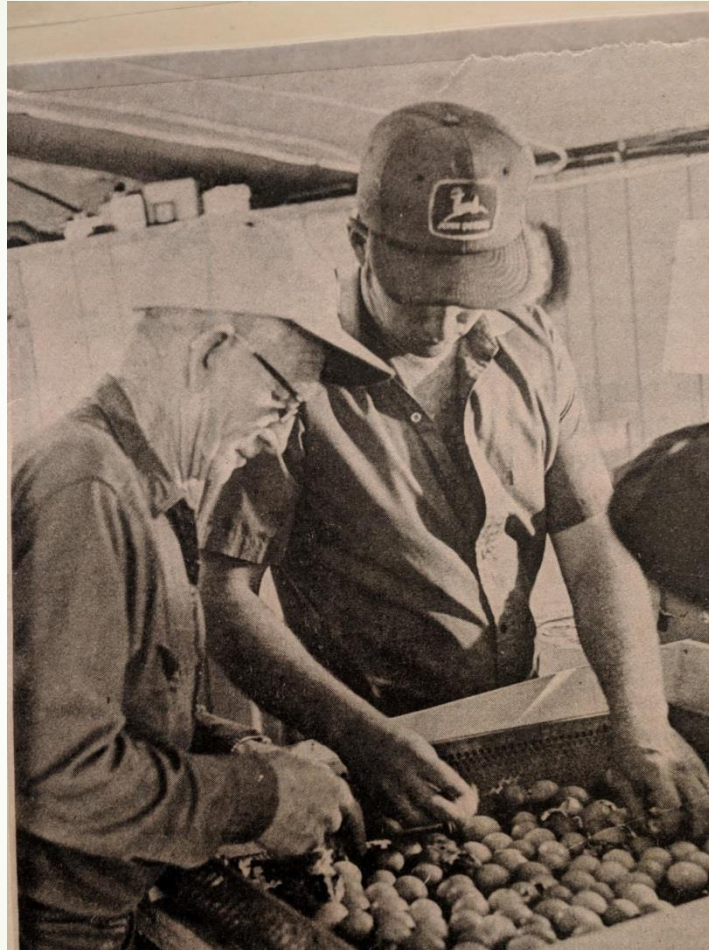
FORSGREN'S
PHEASANT FARM INC.

This is how the farm looked in the 50's



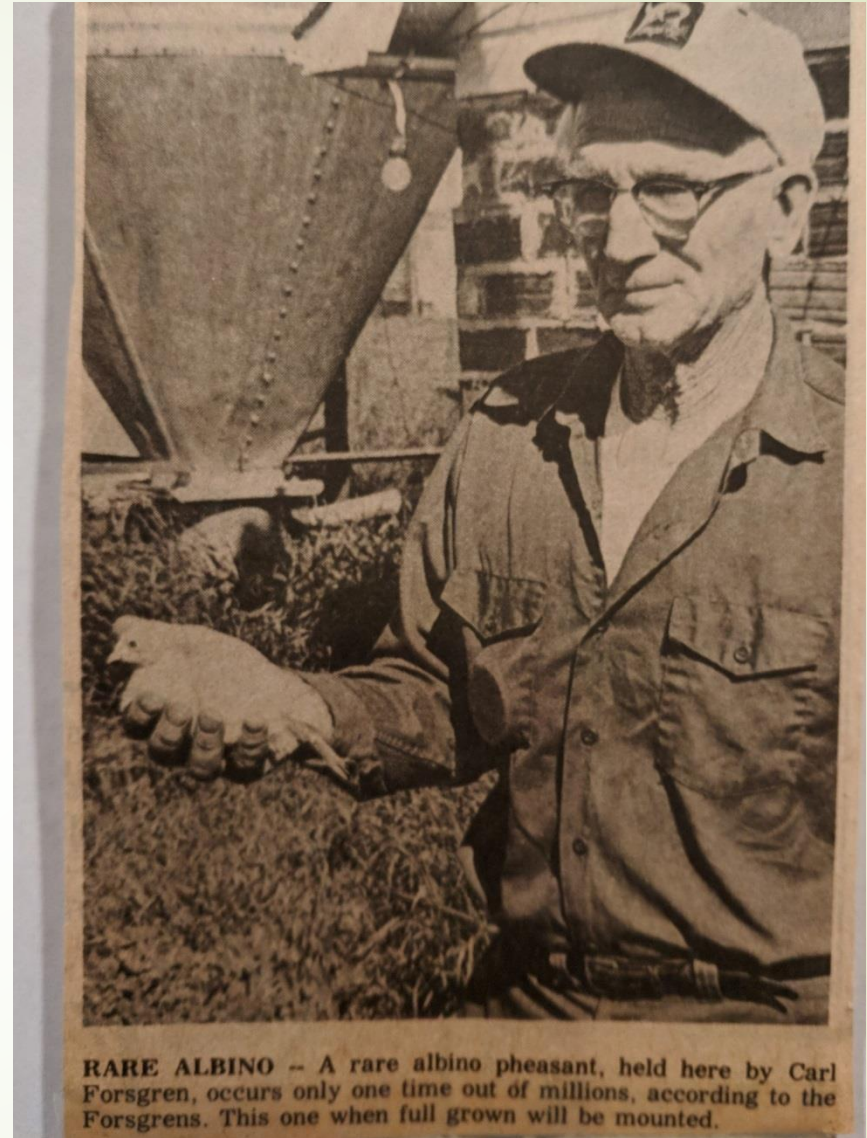
1968

- Carl & Darrel Forsgren bought 50 chicks from MacFarlane's.



A Hobby gone awry

Carl Kept 12 hens and 2 roosters and built an incubator. They hatched too many and advertised the excess. The customer ordered 500 for the next year and so it began.



Carl with an Albino pheasant

The 1st incubator.



Upgrade to
“high tech”
incubator



Original location

► Our original location was a peninsula of land between two lakes. Pressure from EPA and the DNR on other area farms precipitated the move to our current location.



The original
farm.





In 2004 we moved our entire farm.



We moved six buildings and built five new buildings over the course of one year. I also built a house at the same time.



The moving Company moved 3 buildings at a time.



The buildings were moved and set in place in October of 2004.

My dad forgot
to take the
tomatoes out
of the window.
They all made
the 5 mile trip
successfully!





The building site was prepared in July and August of 2004



The site of the new hatchery.



The new location was a field. No roads, no existing building site.



Pen construction started in the summer of 2004.



About 30 pens were constructed in 2004. Top nets and the remaining 10 pens were finished in 2005.



We normally had a summer crew of 3-4 people. During the moving process we had 9 summer workers.



We moved our breeding hens in January of 2005. These were the only birds moved from the old farm to the new.

New location



Farm flyover



Egg production

Our breeder barns and 2nd set of pens



Egg Collecting



Egg Washing

- Eggs are collected 6-7 times throughout the day.
- They are then washed and disinfected and put into the cooler.
- We set eggs every Monday and hatch every Friday.



Setting Eggs



Each unit holds over 21,000 eggs @ capacity

Natureform Incubators in 2014



Natureform Hatchers



Hatching



Brooding chicks

Putting down chicks



Up to 800 per stove



Chick rearing

We've used bidie drinkers in past years



We are transitioning to nipple drinkers in 2018

Repurposed flower pot



Blindering (peeping)



6 week old chicks are coaxed to one end of the barn. Then we drop the dividing net and seal each end. 2 people blindering with 3 total catchers. We do about 1500/hr.

The only actual picture of blinding



Axel likes to be involved with blinding

Blindered birds

We use clip on blinders



Birds sunning themselves



Moving birds to the pens



Main pens 1ST addition



2nd group of pens added in 2006 & 2010



The newest pen addition

- 12 pens built in 2014
- 6 more built in 2015
- Building added in 2017
- Plan for 6 more pens in 2018



Main pens with chaseway



Chasway down the center of all pens.



Holding pen attached to catch building



Chasing birds



Loading birds



Up to 800 in catch building



Axel catching a stray





A load of roosters headed to SD

Unloading birds



Unloading birds



Making feed



Making feed



Digital scale



**Upgraded Feed truck mostly used for
hauling bulk commodities i.e. corn,
soymeal**



Feeding pens



Filling Feeders



Winter of 2005



Make work fun. Even when it's not!



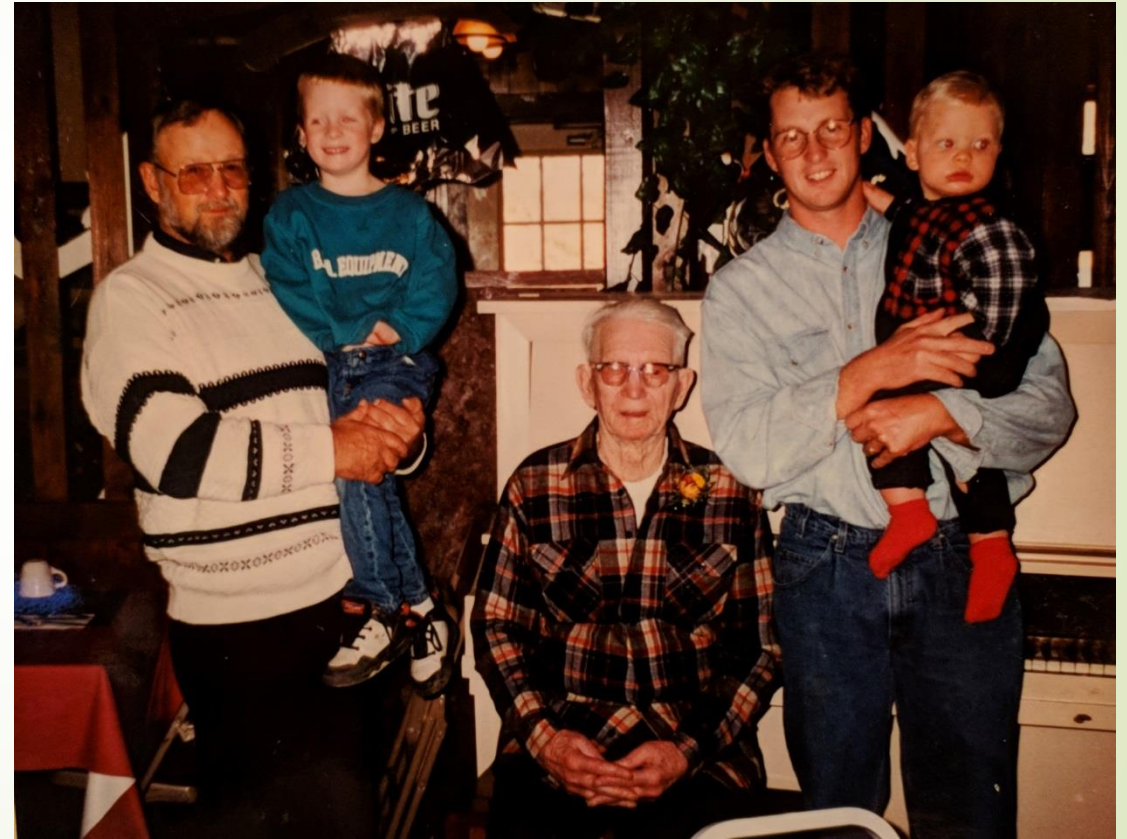
Tough winters



Family business early 90's



Me and my Mom Kathryn and dad Darrel



The Forsgren men

5th Generation of pheasant farmers?



Family business 2018



My wife Lisa, daughter Grace, Son's Tucker and Cole, his wife Lindsay, and my wonderful grandson Warren Michael.

My Beautiful wife



Cole, Tucker and Grace



Cole, Lindsay and Warren Michael



Our work crew



Rue, Axel, Margo and Piper

Working dogs

Best friends



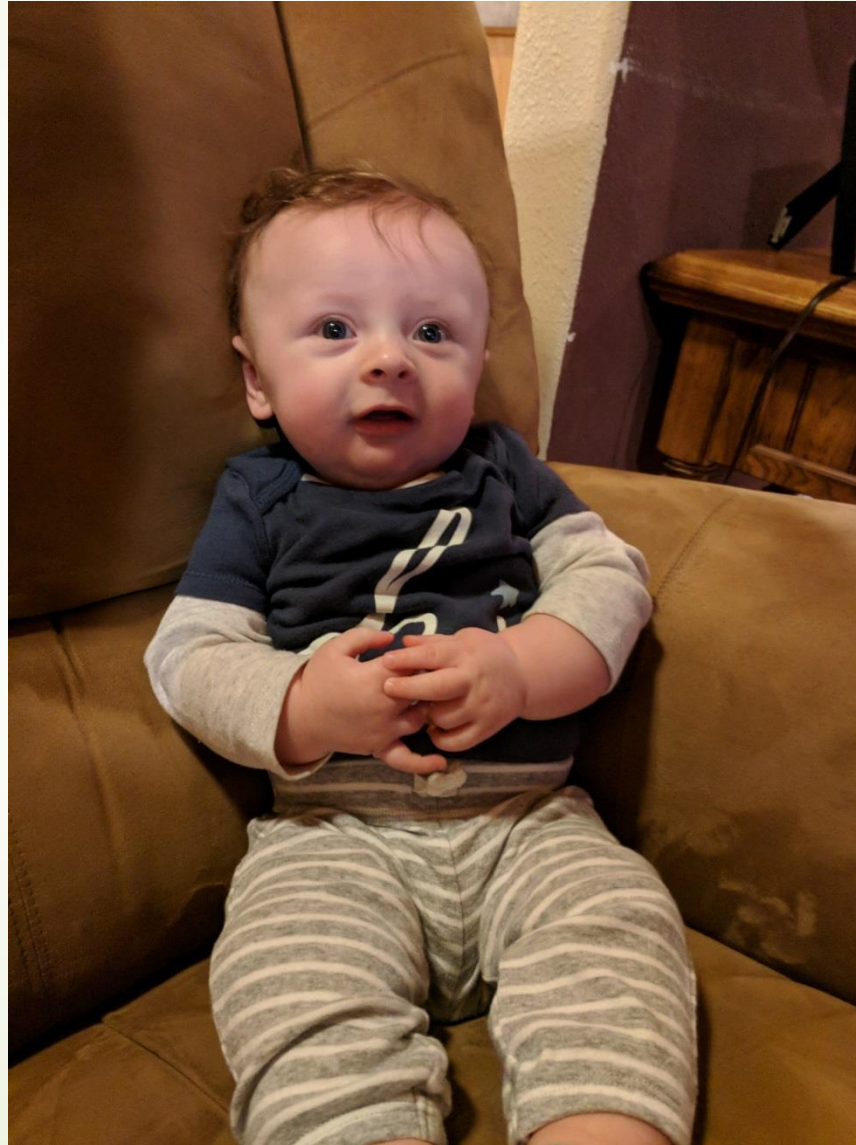
Natural born killer



Past employees



The future of Forsgren's Pheasant farm???





Questions?